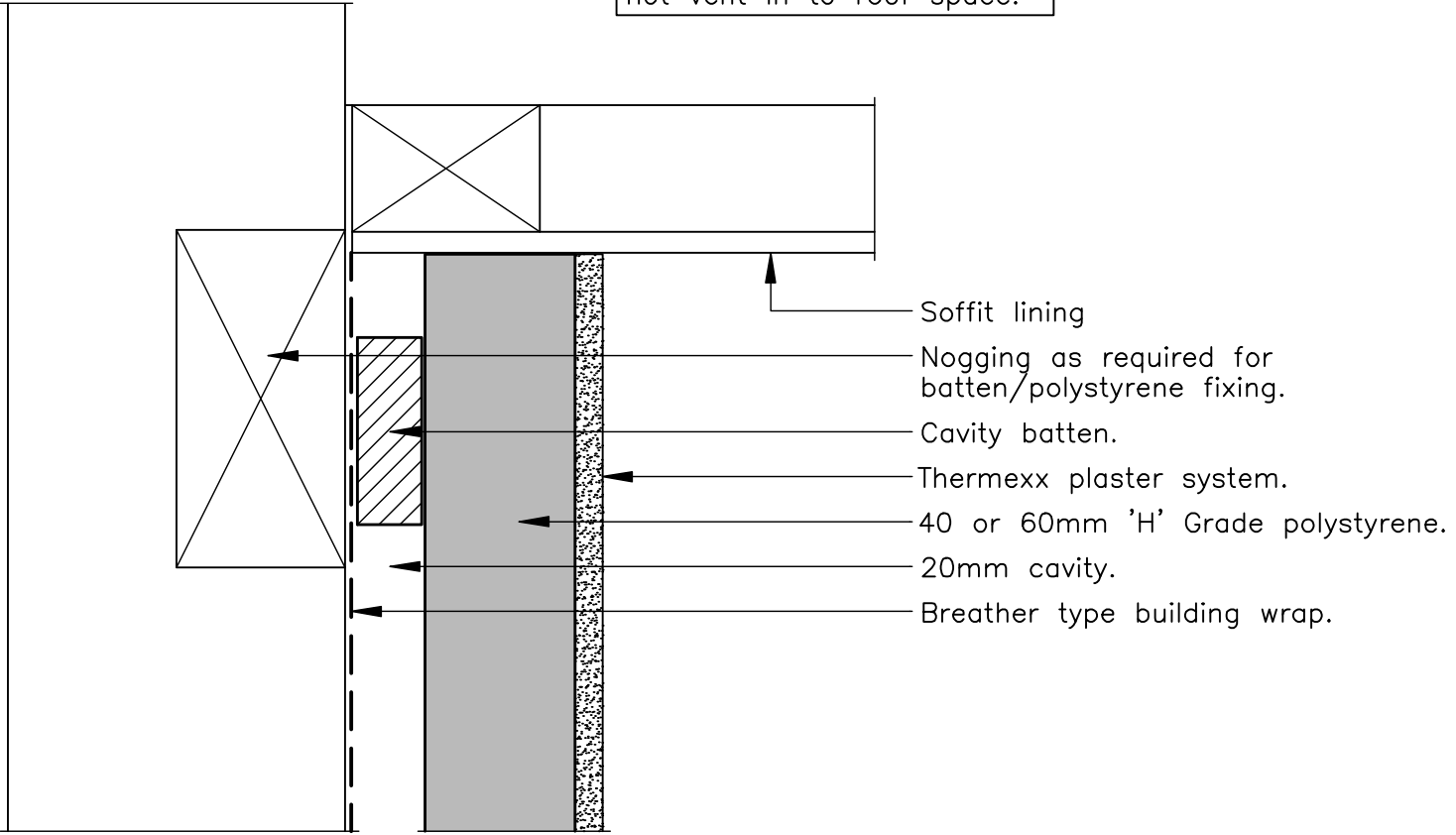


Note:
Ensure that wall cavity does not vent in to roof space.



- Soffit lining
- Nogging as required for batten/polystyrene fixing.
- Cavity batten.
- Thermexx plaster system.
- 40 or 60mm 'H' Grade polystyrene.
- 20mm cavity.
- Breather type building wrap.



**Thermexx Plaster System
Soffit Detail**

Drawing No:	TH-021
Scale:	NTS
Drawn by:	CGB
Date:	12/05/09

Thermexx Plaster System Details are specifically drawn for use by Local Authorities, Building Contractors, Equus Applicators, Architects and design professionals. All details are drawn to assist in the development of project specific details. Details may be modified where necessary to accommodate job specific requirements but must be approved by Equus Industries Ltd. All components must be supplied by Equus Industries Ltd. Equus Industries Ltd reserves the right to alter or upgrade details at any time without prior notice.