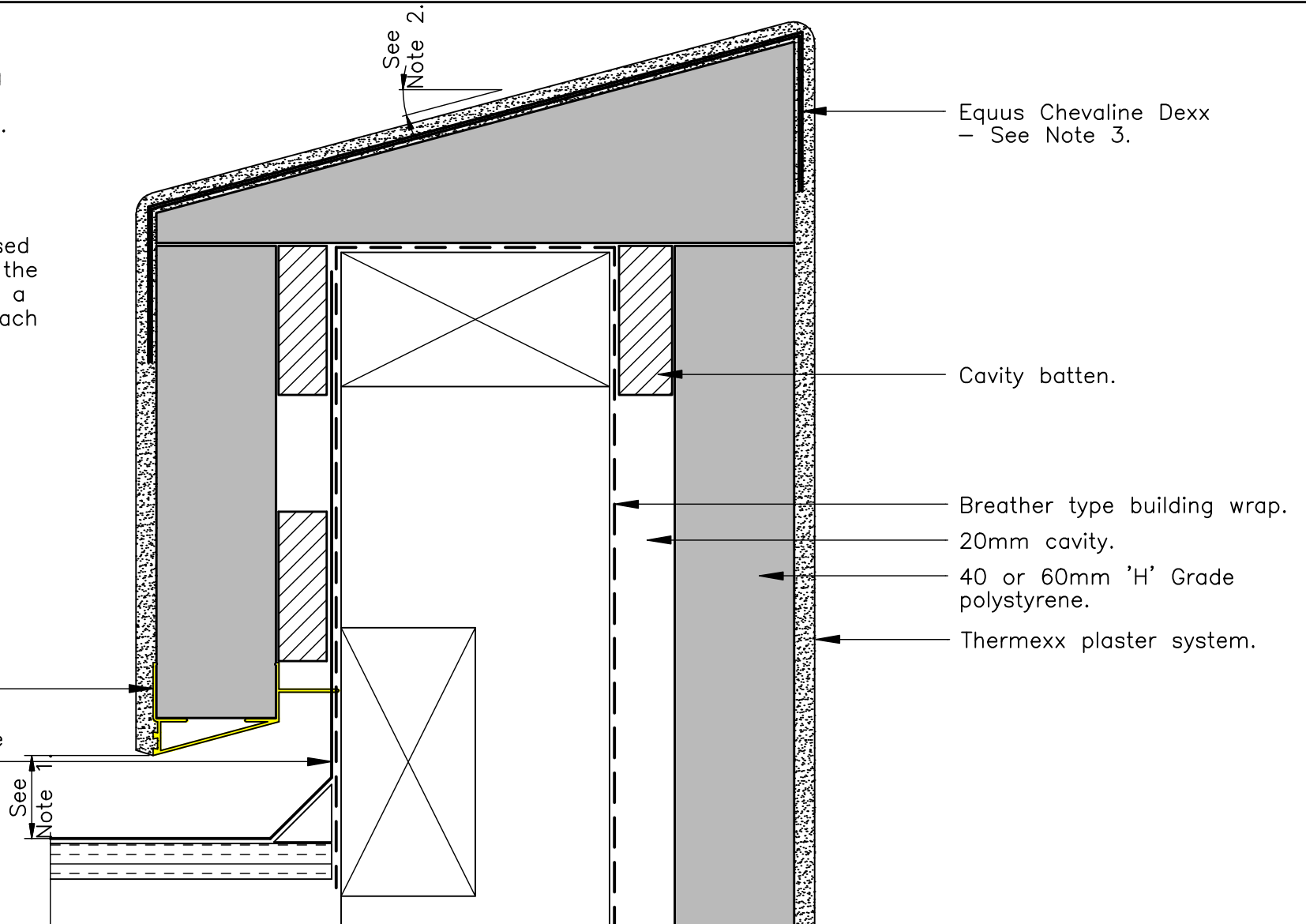


Notes:

1. 35mm min. If roof is being used as an internal gutter, distance to be 100mm min.
2. For parapet width less than 300mm wide, slope to be 15° min.
3. Equus Chevaline Dexx membrane system to be used in the plaster system over the top of the parapet and for a minimum of 50mm down each face.

Perforated base channel.
Roofing membrane to continue 150 min up vertical face.



**Thermexx Plaster System
Parapet Cap Detail**

Drawing No:	TH-018
Scale:	NTS
Drawn by:	CGB
Date:	12/05/09

Thermexx Plaster System Details are specifically drawn for use by Local Authorities, Building Contractors, Equus Applicators, Architects and design professionals. All details are drawn to assist in the development of project specific details. Details may be modified where necessary to accommodate job specific requirements but must be approved by Equus Industries Ltd. All components must be supplied by Equus Industries Ltd. Equus Industries Ltd reserves the right to alter or upgrade details at any time without prior notice.