

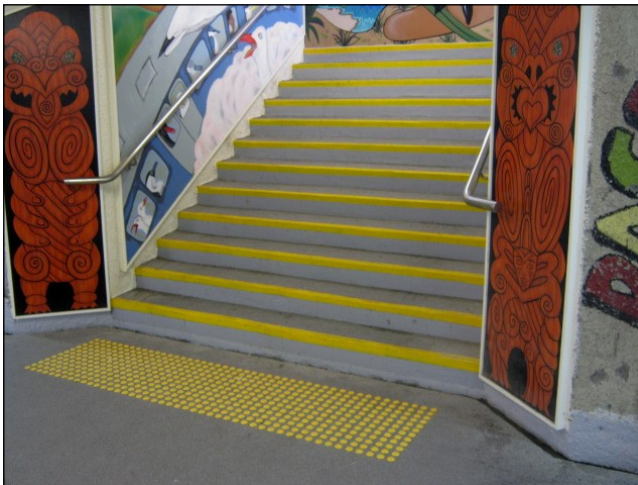
EQUUS PRODUCT SYSTEM REFERENCE SHEET



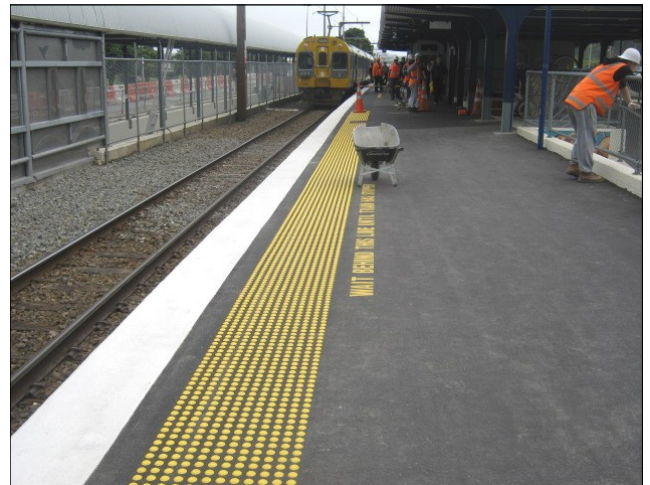
Stairs before Duracon application



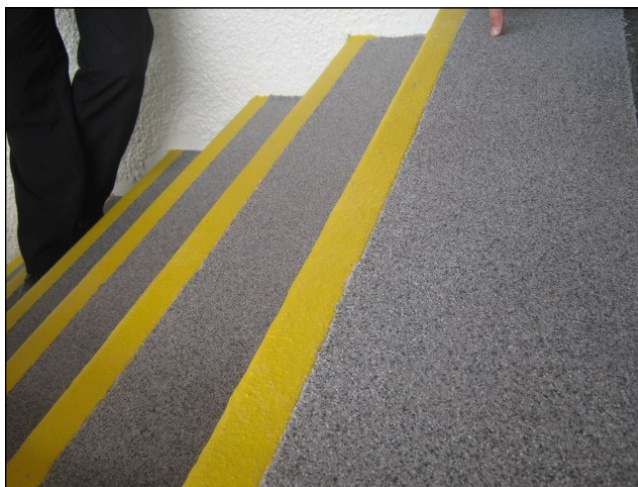
Entrance ramp completed with Duracon BC



Stairs and safety lines completed with Duracon BC



Platform edge completed with Duracon BC



Finished project

Project Name: Porirua Train Station

Location: Wellington

Project Type: Infrastructure

System: Duracon BC Flooring refurbishment to concrete stairs and platform

Certified Applicator: Surfaceworks Ltd

Completion Date: 2011

Equus Industries Ltd

PO Box 601, Blenheim, New Zealand

Email: info@equus.co.nz

Website: www.equus.co.nz