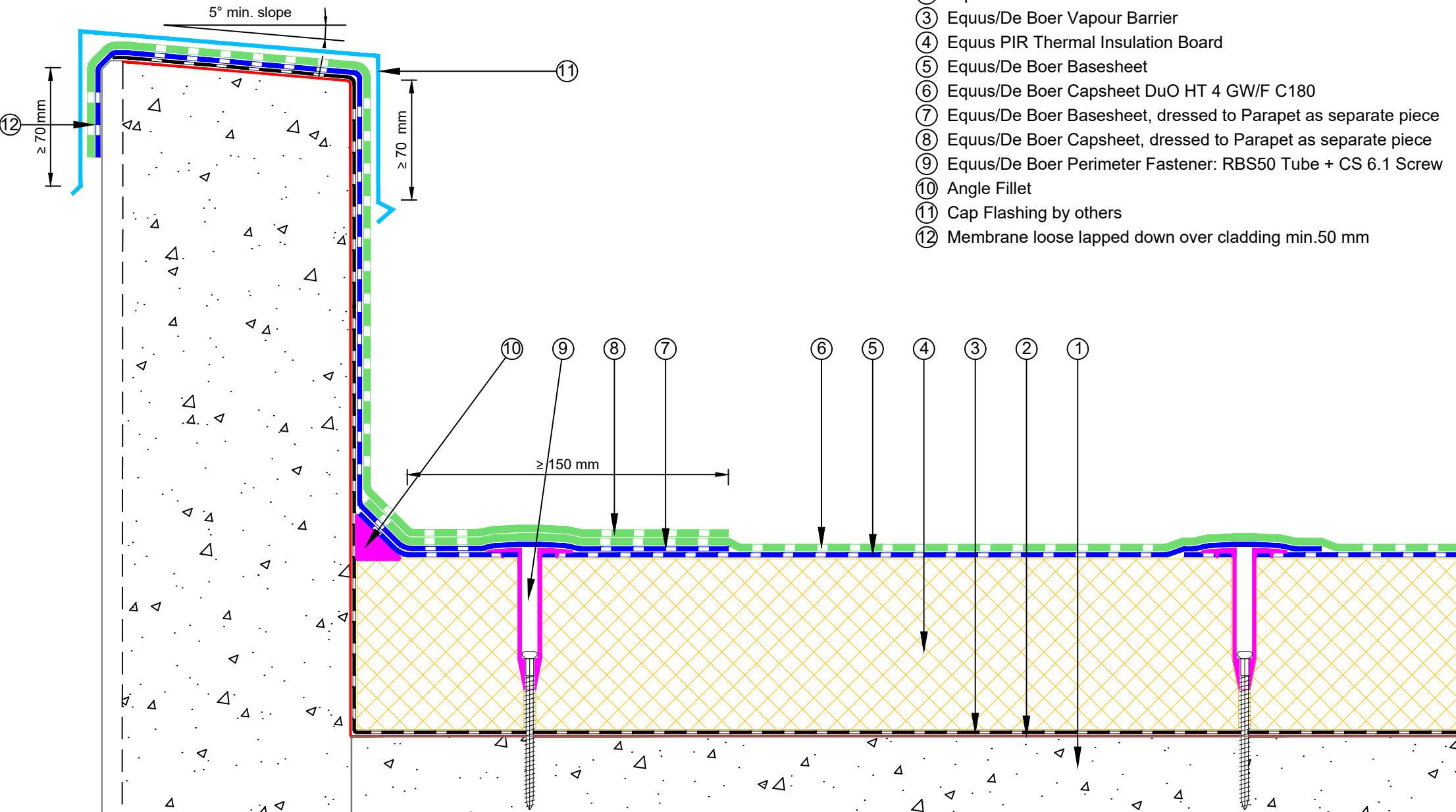


NOTE: Fastener spacing to follow De Boer project specific engineered fixing plan.

- ① Concrete Roof Slab laid to Fall
- ② Equus/De Boer DuO Primer
- ③ Equus/De Boer Vapour Barrier
- ④ Equus PIR Thermal Insulation Board
- ⑤ Equus/De Boer Basesheet
- ⑥ Equus/De Boer Capsheet DuO HT 4 GW/F C180
- ⑦ Equus/De Boer Basesheet, dressed to Parapet as separate piece
- ⑧ Equus/De Boer Capsheet, dressed to Parapet as separate piece
- ⑨ Equus/De Boer Perimeter Fastener: RBS50 Tube + CS 6.1 Screw
- ⑩ Angle Fillet
- ⑪ Cap Flashing by others
- ⑫ Membrane loose lapped down over cladding min.50 mm




equus
 E-mail : admin@equus.co.nz
 Web : www.equus.co.nz

**DuOtherm Warm Roof on Concrete
 Parapet Detail
 Membrane termination with flashing**

Equus/De Boer Waterproof Membrane Details are specially drawn for use by Local Authorities, Building Contractors, Equus Applicators, Architects and design professionals. All details are drawn to assist in the development of project specific details. Details may be modified where necessary to accommodate job specific requirements but must be approved by Equus Industries Ltd. All components must be supplied by Equus Industries Ltd. Equus Industries Ltd. reserves the right to alter or upgrade details at any time without prior notice.

Drawing No:	DBDTC-D1b
Scale:	1:3 @ A4
Drawn by:	NKT
Date:	07/10/2017



de boer
 waterproofing solutions
 E-mail : info@deboer.be
 Web : www.deboer.be