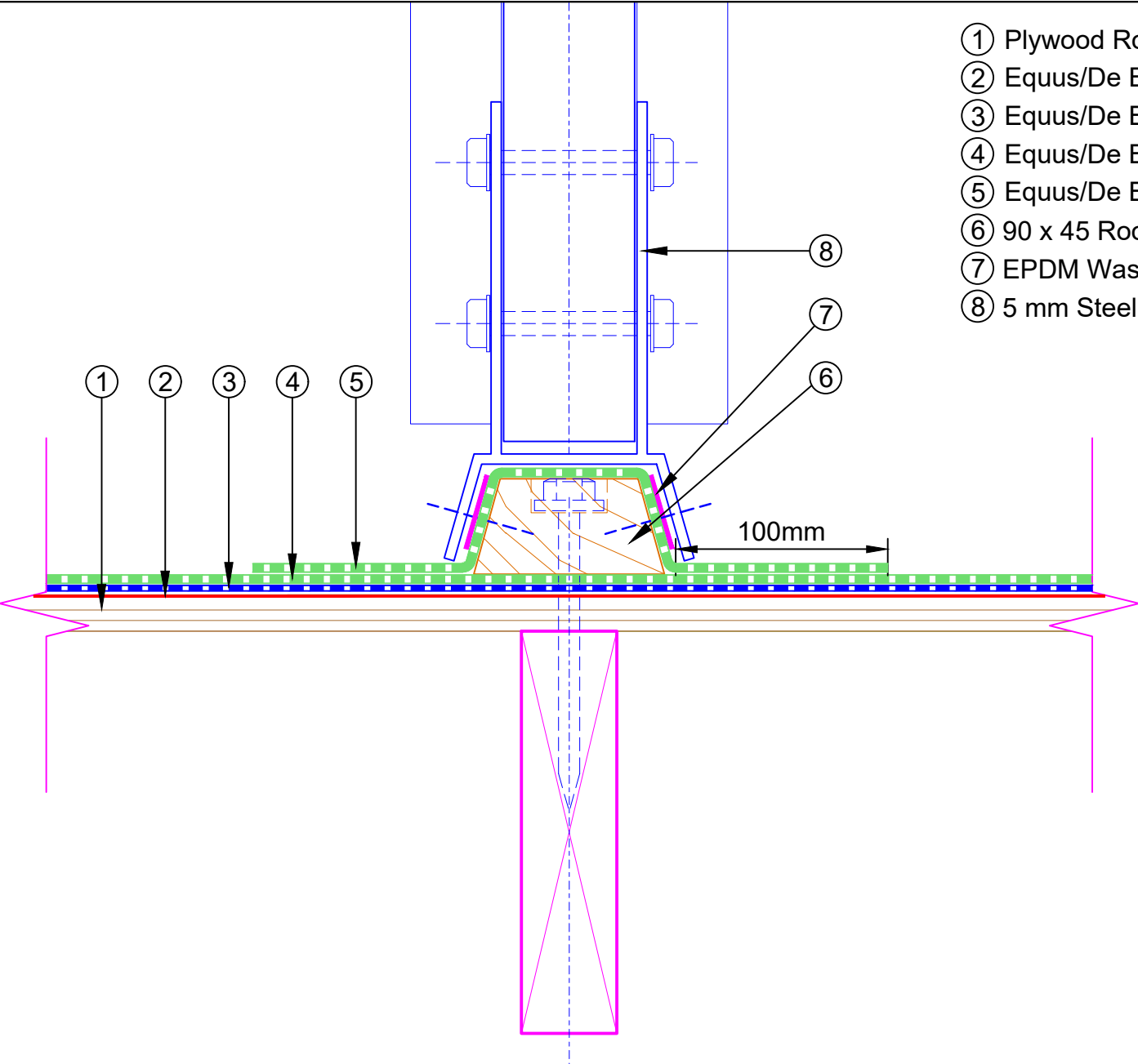


- ① Plywood Roof Deck
- ② Equus/De Boer DuO Primer
- ③ Equus/De Boer Base Sheet DeboPlast 2.5 T/F C175, fully bonded
- ④ Equus/De Boer Cap Sheet DuO HT 4 Slates/F C180, fully bonded
- ⑤ Equus/De Boer Cap Sheet as separate piece
- ⑥ 90 x 45 Roof Battens
- ⑦ EPDM Washer under Screwhead
- ⑧ 5 mm Steel Bracket




**equus**  
 E-mail : [admin@equus.co.nz](mailto:admin@equus.co.nz)  
 Web : [www.equus.co.nz](http://www.equus.co.nz)

**De Boer DuO Cold Roof on Plywood  
 Screen Framing Bracket Detail**

Equus/De Boer Waterproof Membrane Details are specially drawn for use by Local Authorities, Building Contractors, Equus Applicators, Architects and design professionals. All details are drawn to assist in the development of project specific details. Details may be modified where necessary to accommodate job specific requirements but must be approved by Equus Industries Ltd. All components must be supplied by Equus Industries Ltd. Equus Industries Ltd. reserves the right to alter or upgrade details at any time without prior notice.

Drawing No:	<b>DBC RP-D9</b>
Scale:	1:3 @ A4
Drawn by:	NKT
Date:	27-Aug-2018



**de boer**  
 waterproofing solutions  
 E-mail : [info@deboer.be](mailto:info@deboer.be)  
 Web : [www.deboer.be](http://www.deboer.be)