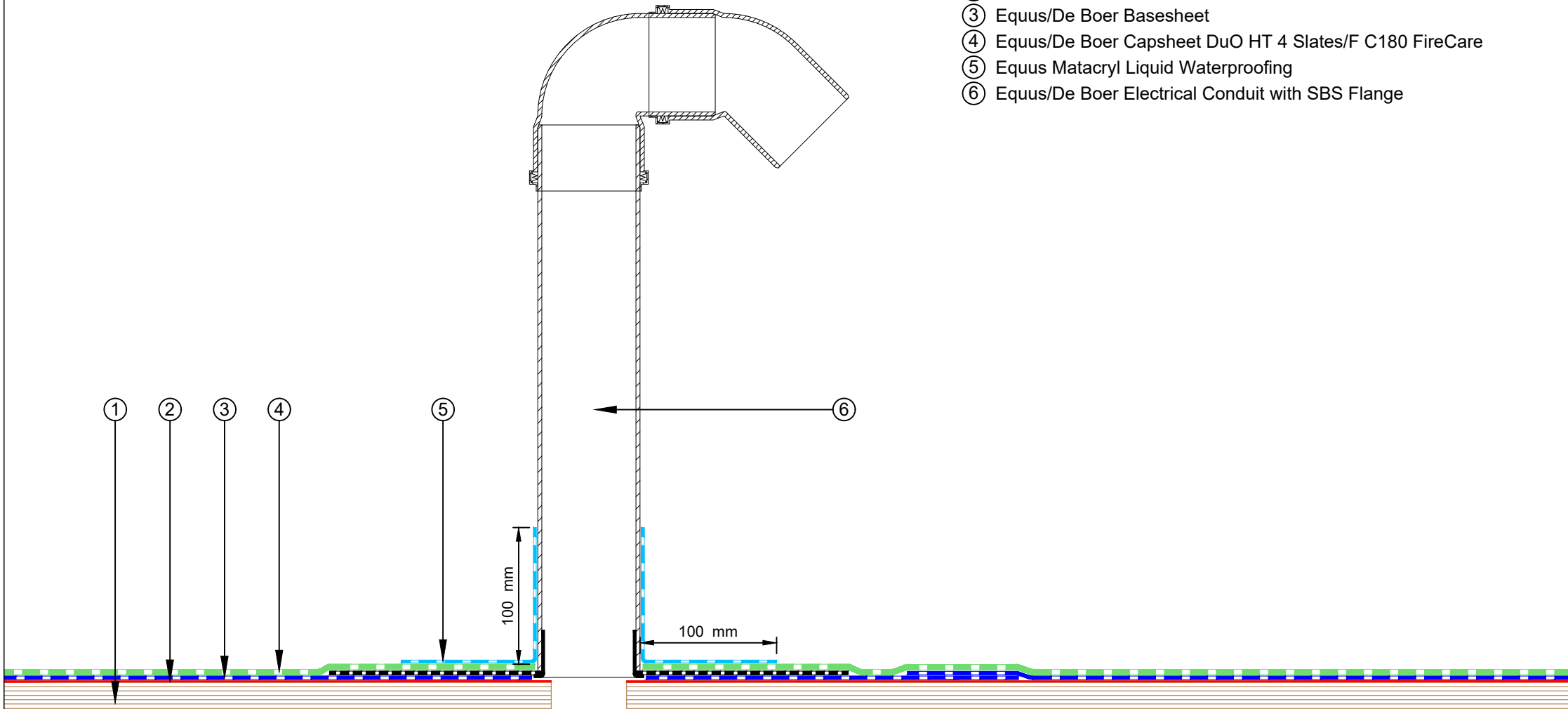


NOTE: Fastener spacing to follow De Boer project specific engineered fixing plan.

- ① Plywood Deck
- ② Equus/De Boer DuO Primer
- ③ Equus/De Boer Basesheet
- ④ Equus/De Boer Capsheet DuO HT 4 Slates/F C180 FireCare
- ⑤ Equus Matacryl Liquid Waterproofing
- ⑥ Equus/De Boer Electrical Conduit with SBS Flange




equus
 E-mail : admin@equus.co.nz
 Web : www.equus.co.nz

**De Boer DuO Cold Roof on Plywood
 De Boer Electrical Conduit**

Equus/De Boer Waterproof Membrane Details are specially drawn for use by Local Authorities, Building Contractors, Equus Applicators, Architects and design professionals. All details are drawn to assist in the development of project specific details. Details may be modified where necessary to accommodate job specific requirements but must be approved by Equus Industries Ltd. All components must be supplied by Equus Industries Ltd. Equus Industries Ltd. reserves the right to alter or upgrade details at any time without prior notice.

Drawing No:	DBCRP-D6
Scale:	1:4 @ A4
Drawn by:	NKT
Date:	11/10/2017



de boer
 waterproofing solutions
 E-mail : info@deboer.be
 Web : www.deboer.be