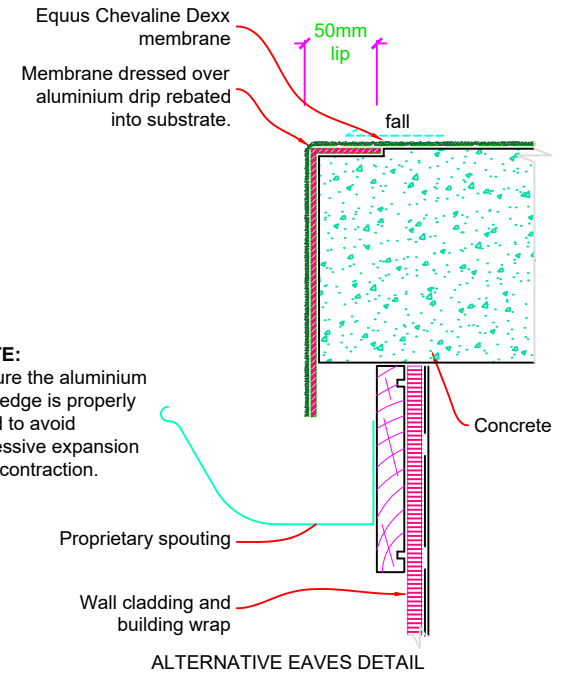


**NOTE:**  
 Fixings through the metal flashing to be individually sealed with an approved sealant compatible with the membrane, and the type of flashing and fixing used.



**NOTE:**  
 Ensure the aluminium drip edge is properly fixed to avoid excessive expansion and contraction.

General Notes:

Indicative details shown for purposes of illustration only. Areas which may be prone to stress such as substrate joints, and internal and external corners are to be treated with a double layer of fibreglass mat. This drawing is to be read in conjunction with the New Zealand building code, and NZS 3604 to determine structural framing and substrate dimensions, materials, and treatment, and also minimum falls, overlapping and spouting size.

PROJECT:	Chevaline Dexx				
Title:	Verge and Eaves Details (Concrete)				
Number:	DC3.1	Scale:	NTS		
Drawn by:	Soulian	Date:	10/12/17	Modified:	REV-01
Approved by:	Callum McDougall			Date:	11/12/17
Signature:	Callum McDougall				



**equus**

email: info@equus.co.nz  
 website: www.equus.co.nz