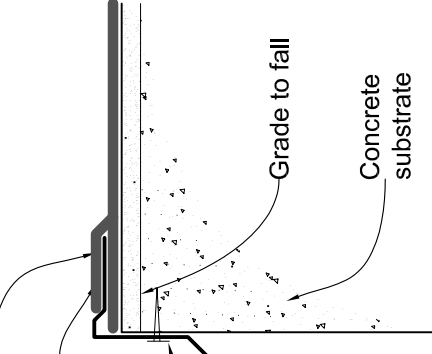


Extra layer of Capping sheet to sandwich flashing

**equus** Tremco Torch on two layer membrane.

Metal flashing side fixed.

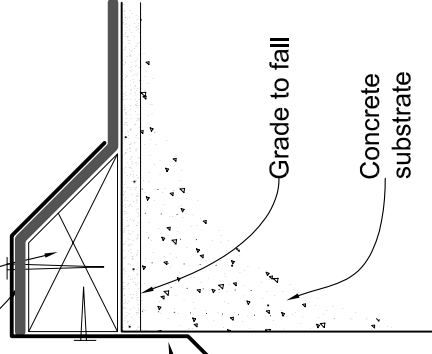


VERGE DETAIL WITHOUT UPSTAND

Upstand may be timber or concrete.

**equus** Tremco Torch on two layer membrane.

Metal flashing



**NOTE:** Fixings through the metal flashing to be individually sealed with an approved sealant compatible with the membrane, and the type of flashing and fixing used.

VERGE DETAIL

**NOTE:**

This drawing is to be read in conjunction with the New Zealand building code, NZS 4210, NZS 4229, and NZS 4230 to determine substrate dimensions, materials, and treatment, and also minimum falls.



**equus**  
WATERTIGHT TECHNOLOGY

**Verge Details**

Drawing No:	TC3.1.1
Cad ref:	
Drawn by:	NLH
Date:	31/01/05

Equus Tremco Torch on Details are specifically drawn for use by Local Authorities, Building Contractors, Equus Applicators, Architects and design Professionals. All details are drawn to assist developing project specific details. However they can be modified where necessary to accommodate job specific requirements, but must be approved by Equus Industries Limited. All components must be supplied by Equus Industries Ltd. We reserve the right to alter or update Details at any time without prior notice.