

# EQUUS PRODUCT SYSTEM REFERENCE SHEET



Full view of roof showing different stages of roof



Plywood substrate with vapour barrier application



De Boer Basesheet mechanically fastened over PIR thermal insulation board and vapour barrier



De Boer DuO capsheet and batten installation

**Project Name:** Te Uru Taumatua—The Tuhoe Building

**Location:** Taneatua, Bay of Plenty

**Project Type:** Commercial

**Project Size:** 1360 sqm

**System:** Equus De Boer DuOthem Warm Roof System on Plywood substrate

**Certified Applicator:** SWP Commercial Ltd

**Main Contractor:** Arrow International

**Architect:** Jasmox

**Completion Date:** 2014

**Equus Industries Ltd**

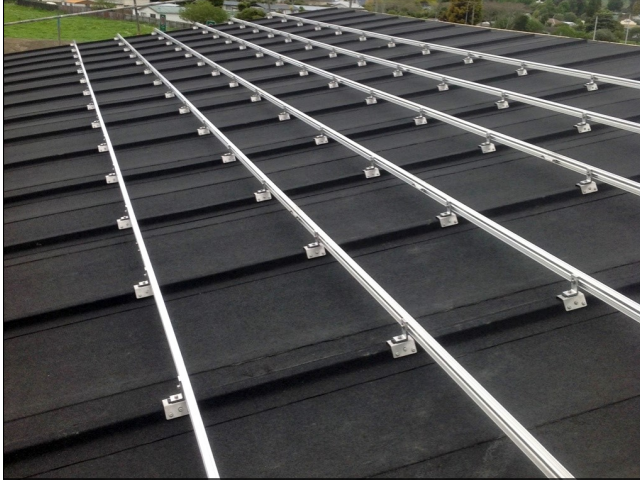
PO Box 601, Blenheim, New Zealand

Email: [info@equus.co.nz](mailto:info@equus.co.nz)

Website: [www.equus.co.nz](http://www.equus.co.nz)



# EQUUS PRODUCT SYSTEM REFERENCE SHEET



Finished De Boer DuO membrane with framing for solar panels



Completed DuO membrane roof



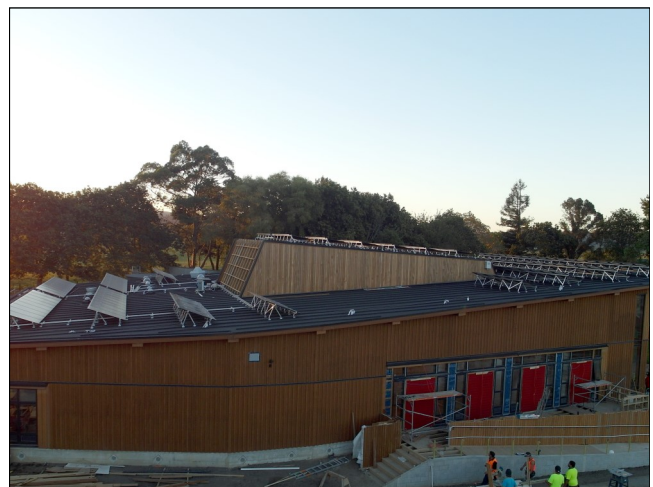
Completed DuO membrane roof with solar panels



Completed DuO membrane roof with solar panels



Finished Project



Finished Project

**Equus Industries Ltd**

PO Box 601, Blenheim , New Zealand

Email: [info@equus.co.nz](mailto:info@equus.co.nz)

Website: [www.equus.co.nz](http://www.equus.co.nz)